

Dante 4 In 4 Out Audio Transmitter

QAI 4BY4POE



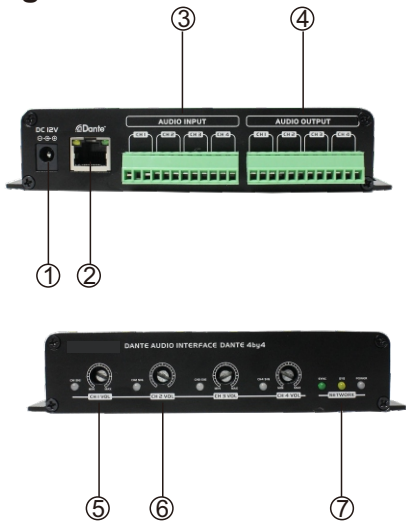
Features

- ▶ Ideal interface to increase the number of microphones or AUX inputs
 - ▶ 4 balanced line outputs can be used simultaneously, and all audio channels are used with Dante network.
 - ▶ 4 balanced MIC/AUX inputs, and also 4 outputs using phoenix connector
 - ▶ CAT5/6 connector to link with Dante network and controlled by Audinate
 - ▶ Small size integrated mounting bracket which can be installed in very limited space
- The volume of each channel can be adjusted independently.

Basic function description

- (1) QAI 4BY4POE interface machine is used for the signal conversion between analog audio signal and Dante digital audio.
- (2) This processor supports 4-channel analog audio signal balanced input and output, including 4-channel Dante digital audio signal input and output of 2 Dante devices.
- (3) It is powered by DC12V, which can be used with 802.3af standard POE switch when adding POE splitter.

Diagram



- 1. Power socket. Plug in the power adapter to power the processor.
- 2. Dante network interface
- 3. Input audio source interface.
- 4. Output audio source interface.
- 5. Signal indicator. The light will be on when input signal.
- 6. Volume adjuster. Adjustable input volume.
- 7. Power indicator. The light will be on when the power is turned on.



Model with "POE" comes with a POE splitter

Use and operation steps

(1) Please follow the instructions in the interface description. You could connect the POE-powered switch or connect the external power adapter. It is normal power supply when the power indicator flashes.

Note: Do not use POE and power adapters at the same time.

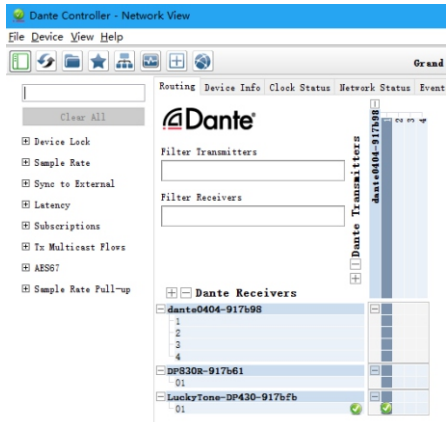
according to your system platform.

Dante Controller windows download link:
<https://we.tl/t-WFGuMiCbFa>

Dante Controller IOS download link:
<https://we.tl/t-5PkFaMDrD2>

(2) In the Dante audio network, each signal of the access network needs to be routed through the Dante Controller software. A one-to-one, one-to-n mapping operation of input to output within the Dante network can be implemented.

Note: The platform for Dante Controller software is Windows and IOS. Please select the appropriate software version



Specification

MODEL	QAI 4BY4POE
Input	4 balanced/unbalanced input
Input Impedance	Greater than 1800 Ω
Max. Input Level	+8dbu@ 0dB gain
Output	4 balanced/unbalanced output
Output Impedance	200Ω balance
Max. Output Level	+20dbu balance
Freq. Response	20Hz – 20kHz, ±1dB
THD	Less than 0.02%
Power Requirements	12V DC or POE
Dimensions	133 x 100 x 26 mm